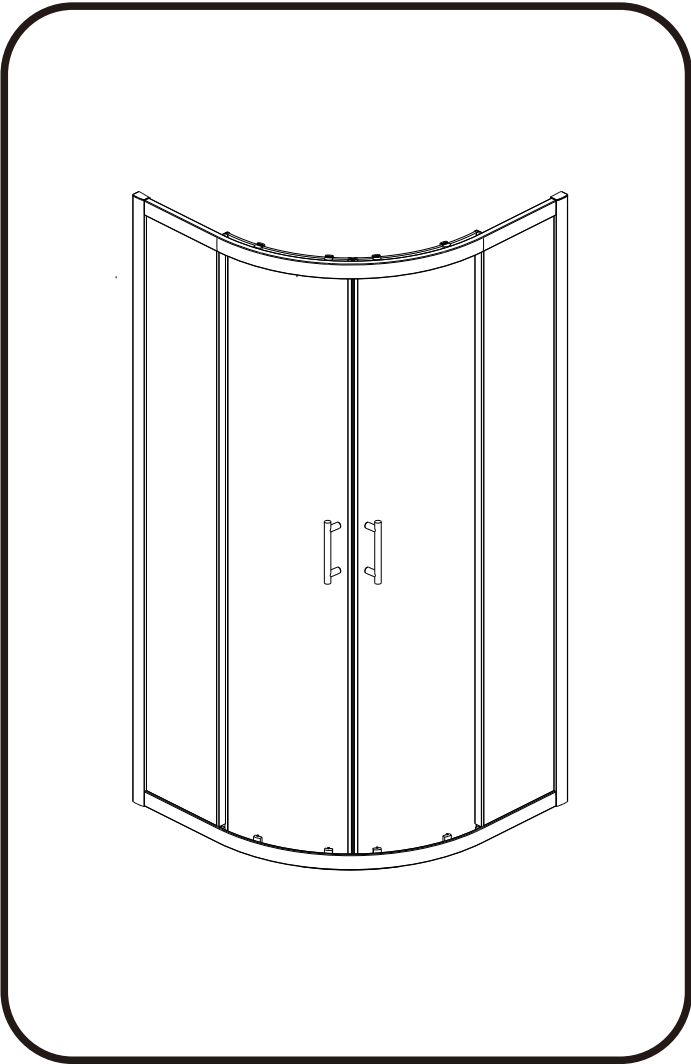


Model No:Celesta

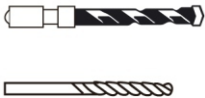
INSTALLATION INSTRUCTIONS



Tools Required



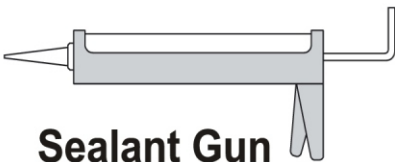
Drill



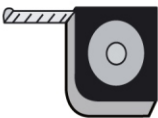
6mm Masonry Drill  
3.2mm HSS Drill



Spirit level



Sealant Gun



Tape Measure



Pencil



PH2 TYPE  
Screwdriver

Please not hand tools **NOT** supplied.

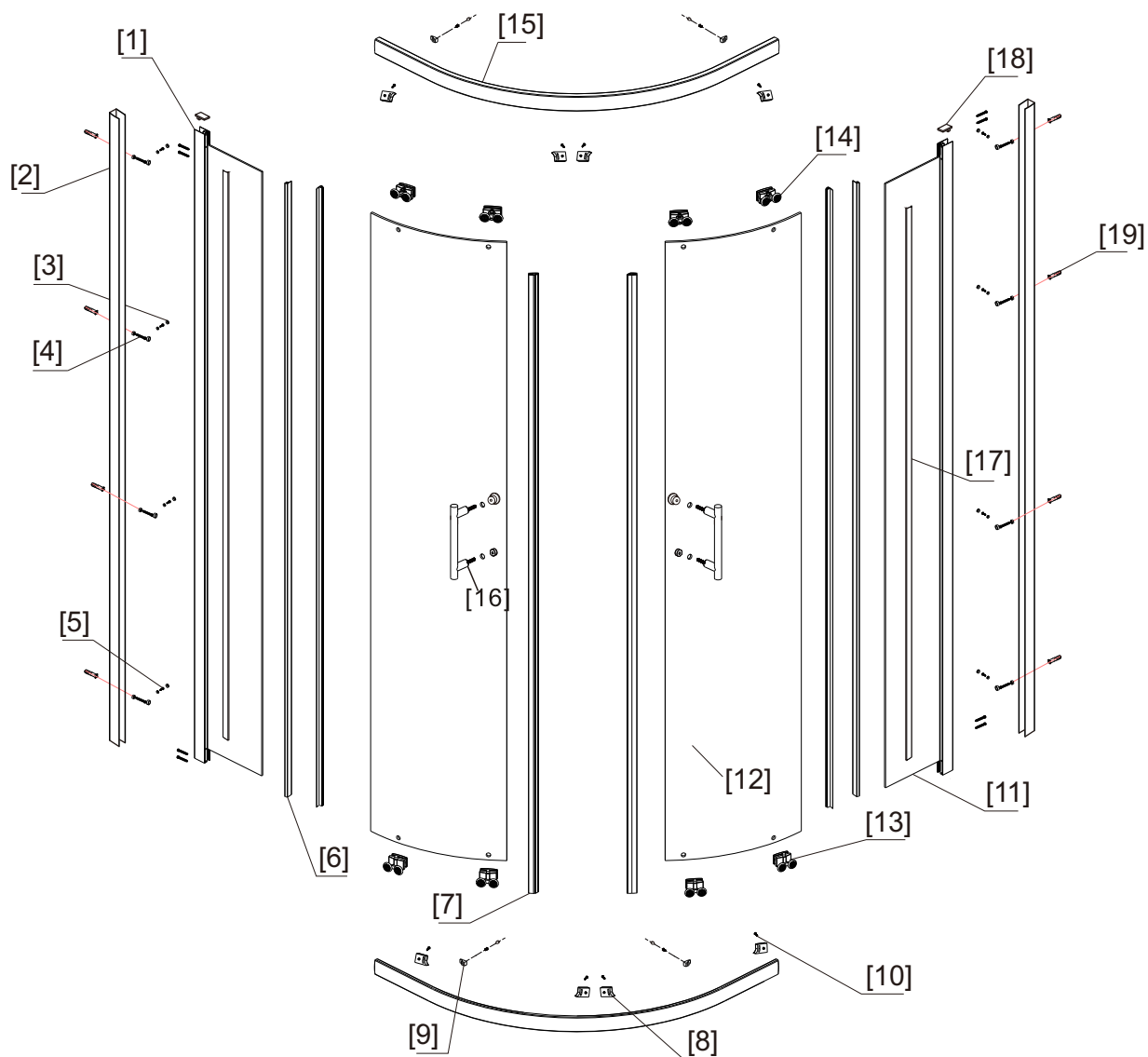
IMPORTANT

These instructions assume that installation is done against solid/tiled walls.

The wall plugs supplied with the installation kit are for use on solid walls.Hollow or stud-partition walls will require alternative fixings.Please consult with a reputable trades person or hardware supplier for the correct type of fixing.

It may also be necessary to consult your tiling supplier about the correct method drilling your tiles.

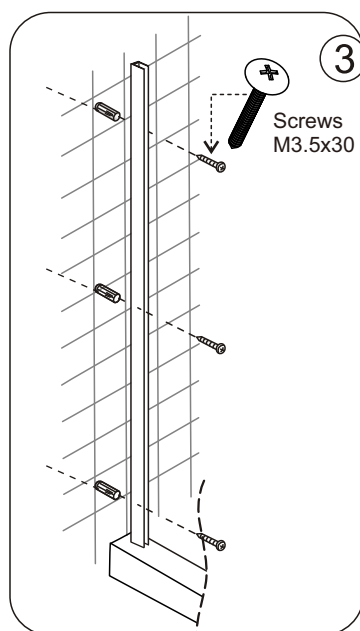
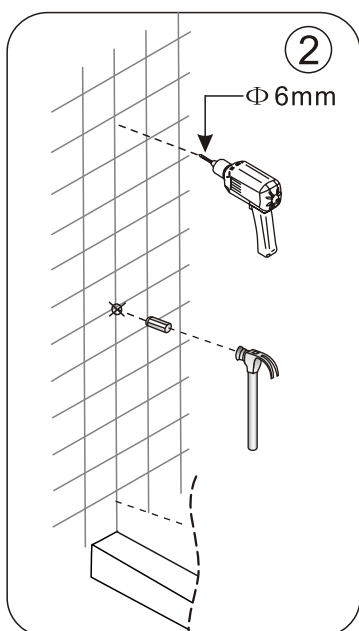
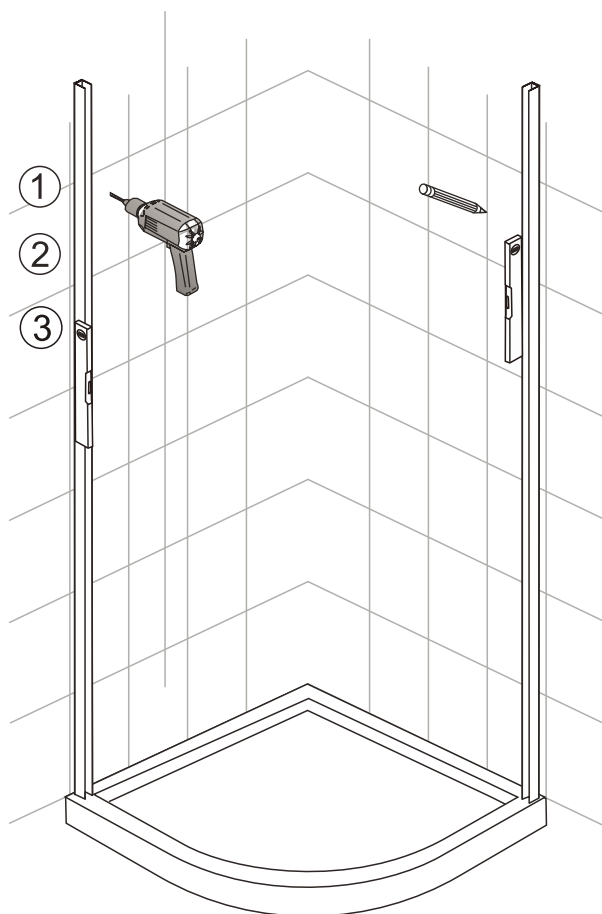
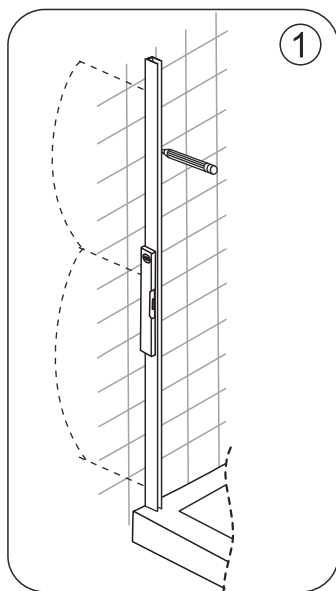
## ◆ Assembly Drawing



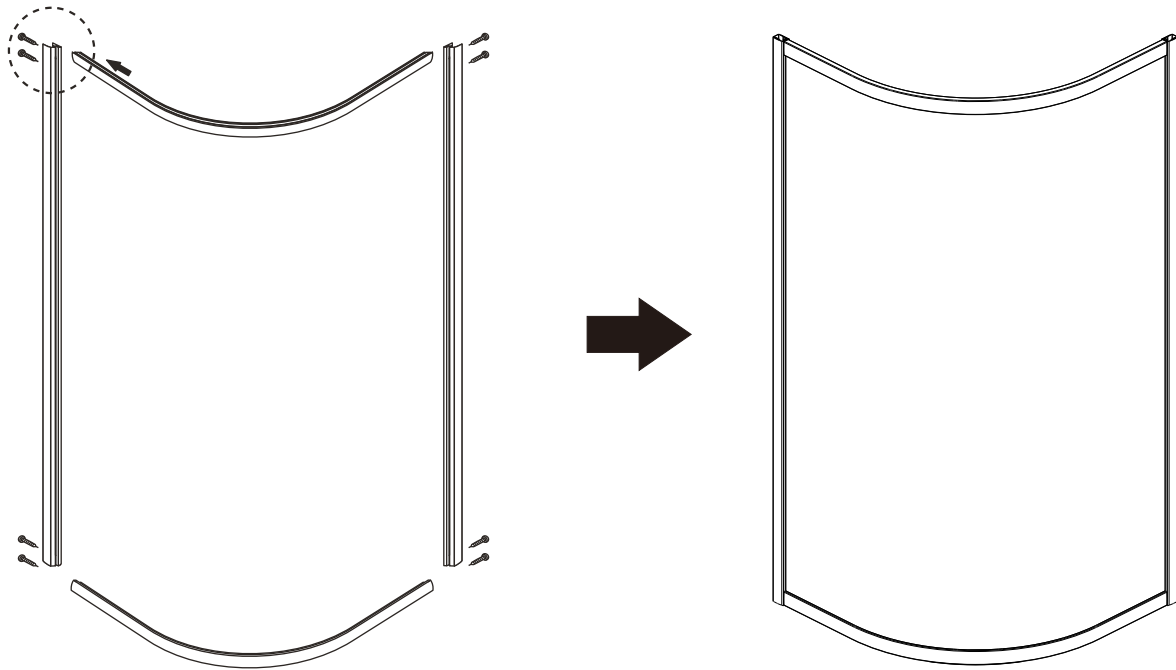
NO.	Description	Qty	NO.	Description	Qty
1	Wall Jamb	2	11	Fixed Glass	2
2	Wall Profile	2	12	Moving Glass	2
3	Cover A+ Cover B	8	13	Bottom Roller	4
4	3.5*30 Screw	16	14	Upper Roller	4
5	4*10 Screw	8	15	Rail	2
6	Waterproof PVC Strip	4	16	Handle	2
7	Magenetic Strip	2	17	Single PVC Strip	2
8	Bumper block	8	18	Wall Profile Cover	2
9	Positioning block	4	19	Expansion Sleeve	8
10	4*10 Screw	12	20		

## ◆ Installation Steps

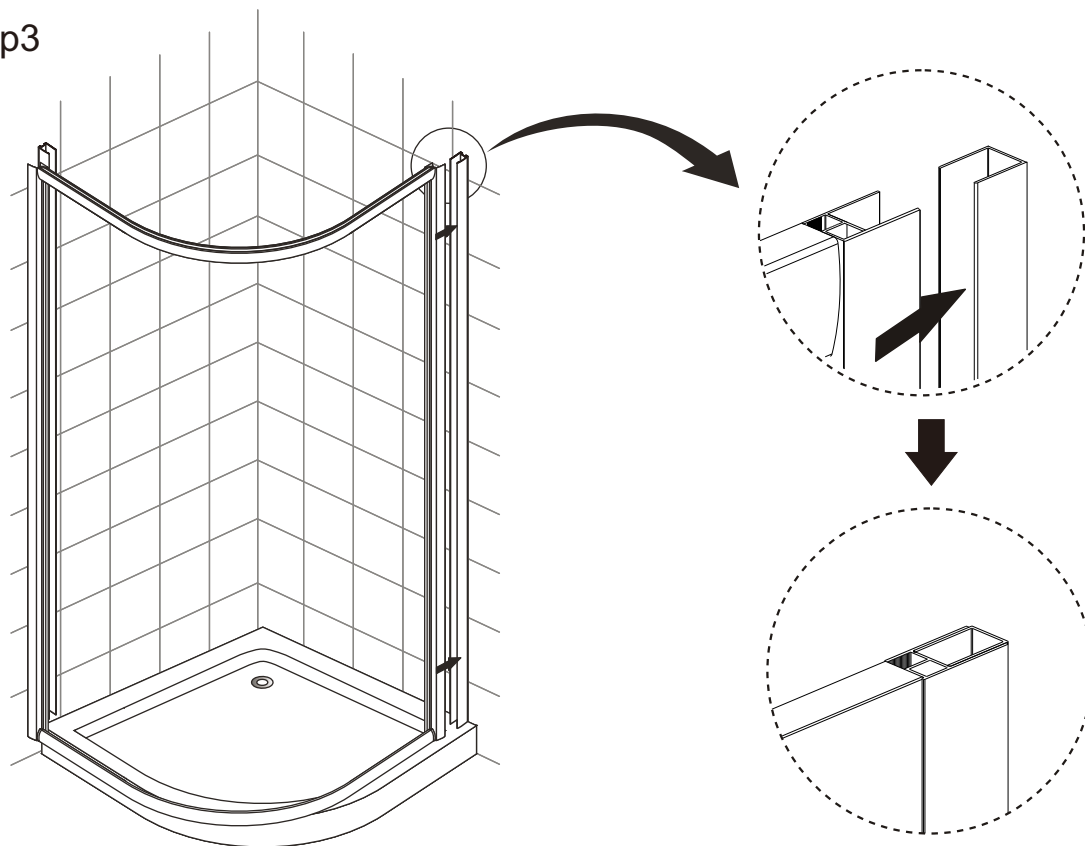
### Step1



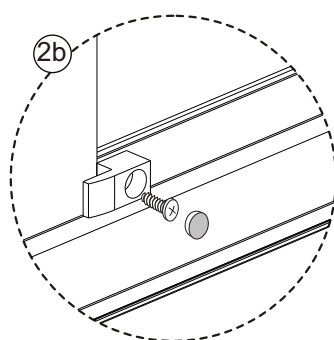
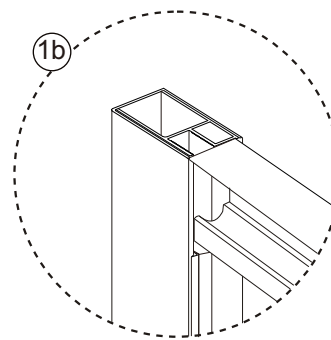
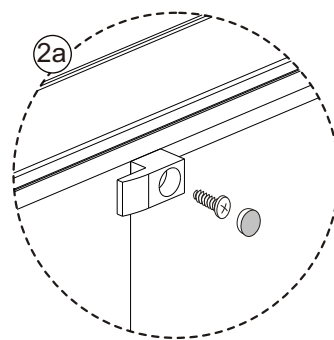
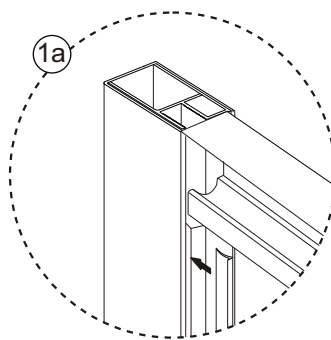
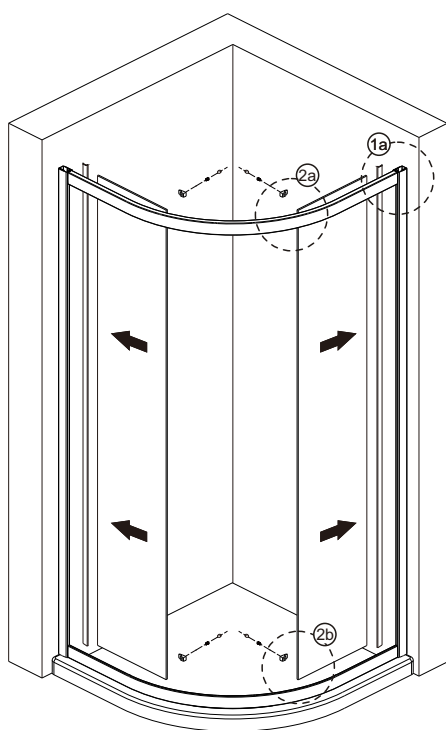
## Step2



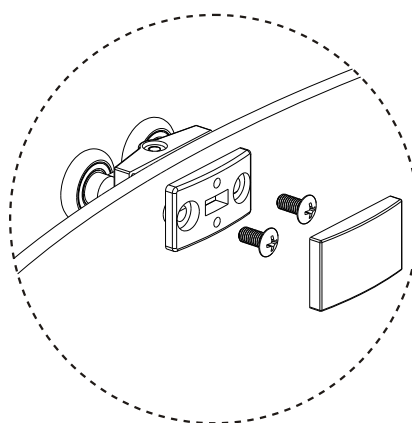
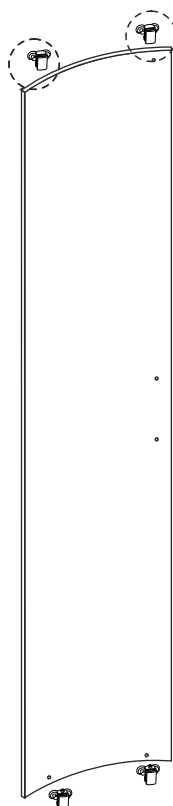
## Step3



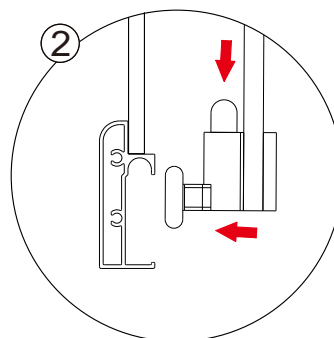
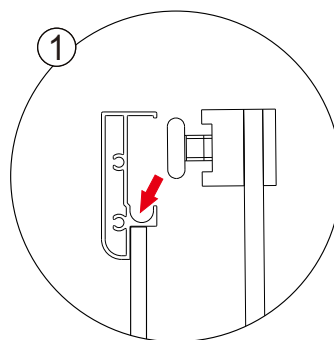
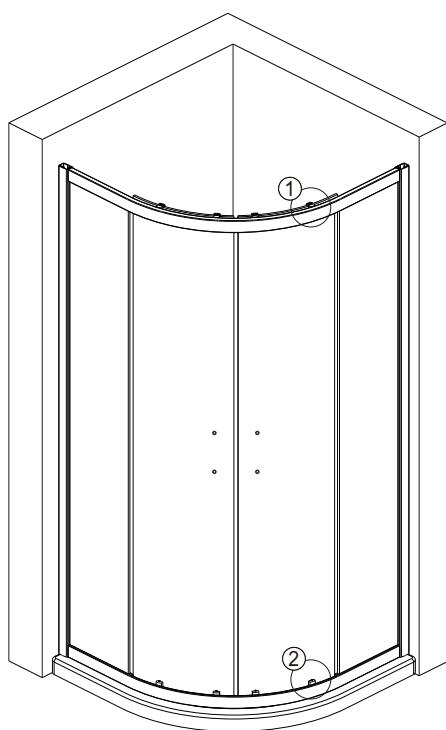
## Step4



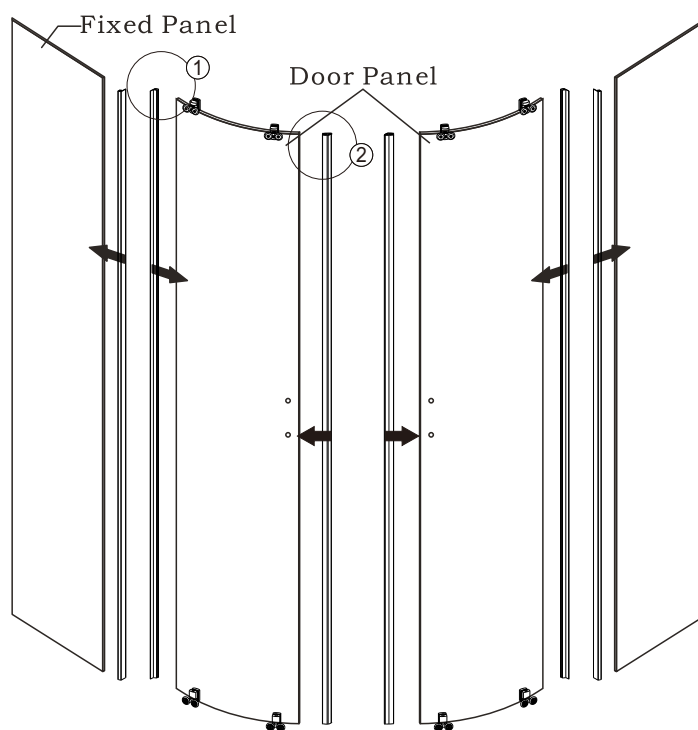
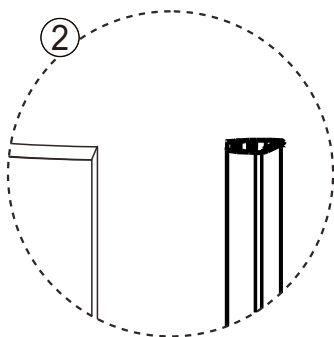
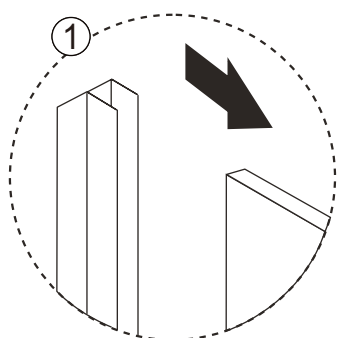
## Step5



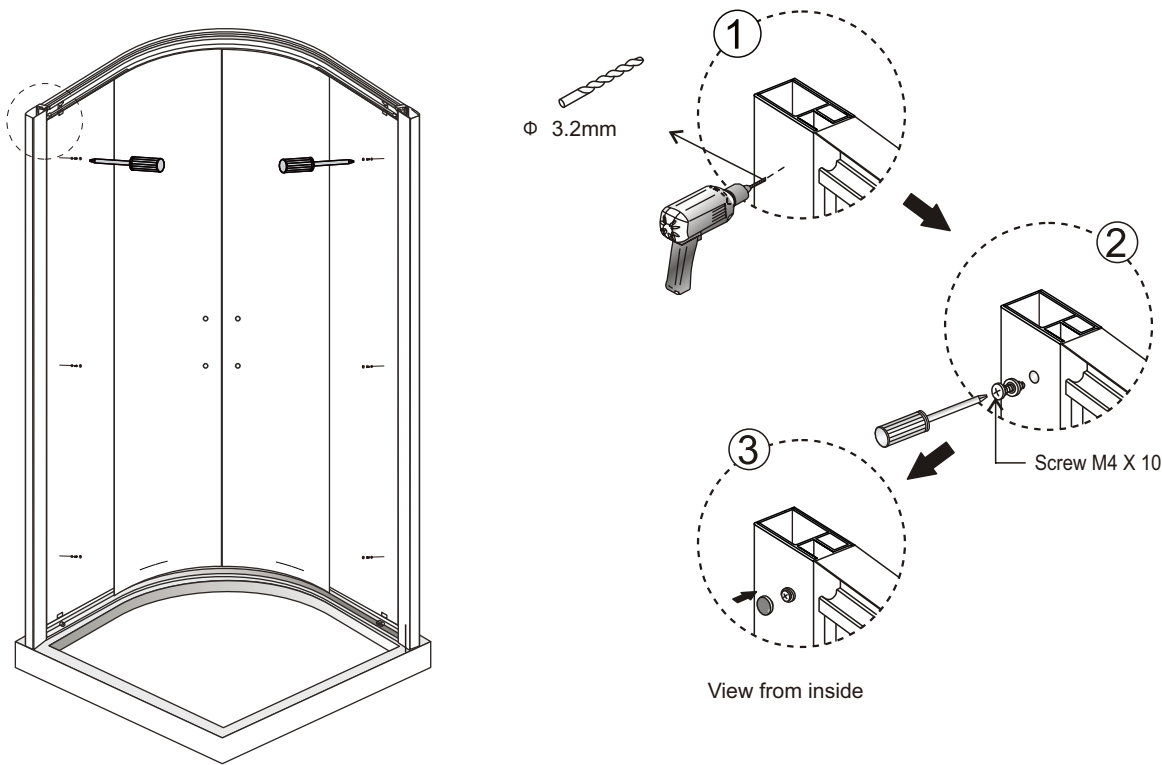
## Step 6



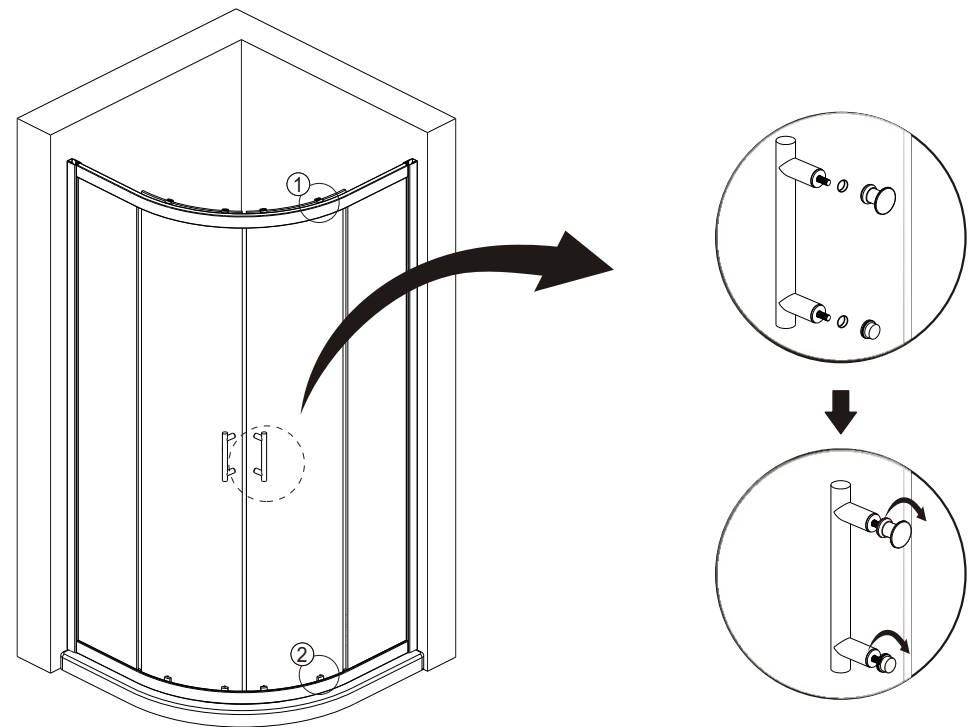
## Step 7



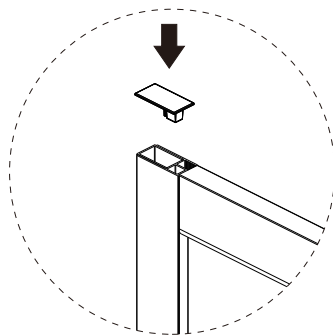
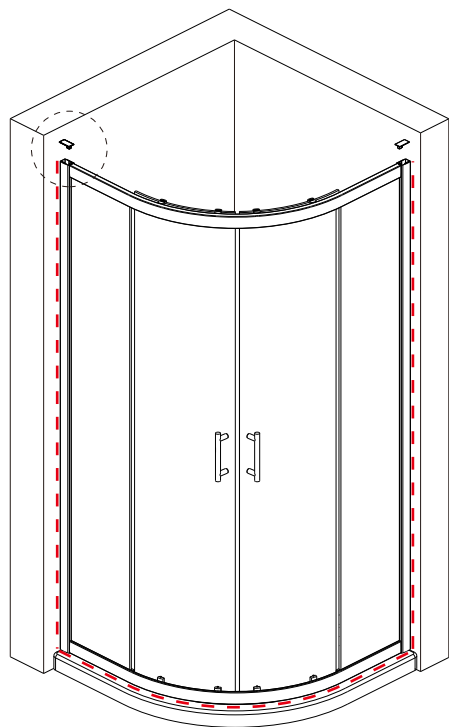
Step 8



Step 9



Step 10



Allow 24 hours for silicone to dry before use.  
silicone on the outside edge only.