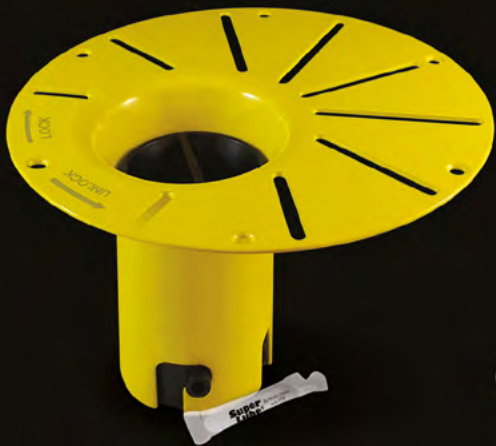


DROP-IN DRAIN™

INSTALLATION KIT FOR FREESTANDING BATHTUB



AN ESSENTIAL FOR YOUR FREESTANDING BATHTUB



Drop-in Drain and
Lubricant



Nut (A), Gasket (B),
Adaptors 1 1/2" female (C)
and 1 1/2" male (D)



Brass tailpiece (A)
and Threaded brass
tailpiece (B)

ABS
Pipe

ADVANTAGE



- Quick, easy and clean process.
- No access panel required.
- Needed for all freestanding bathtub installations.
- Allows for an installation as close to the wall as possible.
- Plate can be uninstalled if adjustments are needed.
- Fits with 1 1/2" male, 1 1/2" female or 1 1/2" threaded bathtub drains.
- Made in Canada.

ALSO AVAILABLE IN PVC

