



## INSTALLATION MANUAL

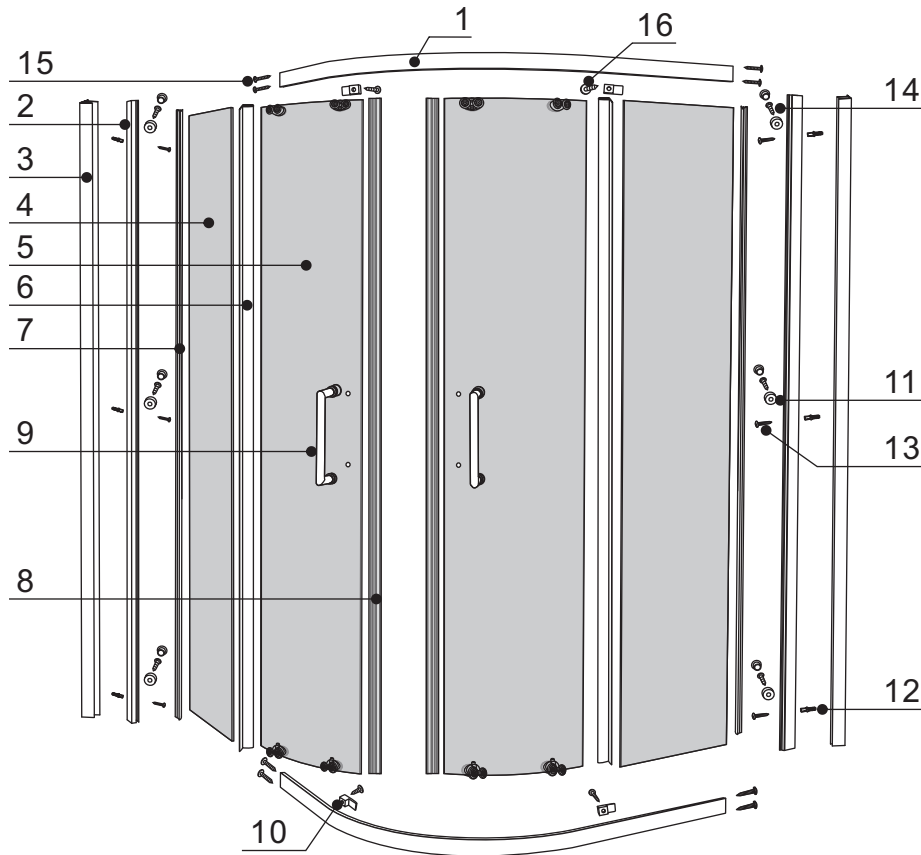
### IMPORTANT

- Thoroughly inspect your product before proceeding with the installation.
- The warranty will be void if the product is installed with a conspicuous defect.

### CAUTION

- To prevent leaks, silicone must be applied on the outside of the shower and not on the inside!
- Read all instructions carefully before starting the installation.
- Save this manual for future reference.

## PARTS LIST



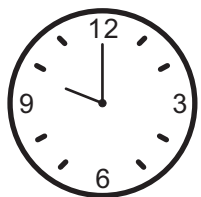
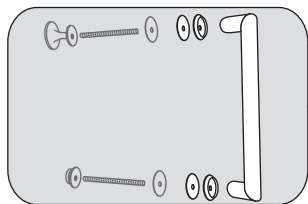
NO.	Description	QTY
①	Alloyed aluminium rolling bar	2
②	Glass channel	2
③	Wall channel	2
④	Fixed glass	2
⑤	Door glass	2
⑥	Gasket kit for fixed and door glass	4
⑦	Squeeze gasket	2
⑧	Magnet extrusion	2
⑨	Stainless steel handle	2

NO.	Description	QTY
⑩	Fixed bracket	4
⑪	Decorating cap	12
⑫	Wall anchor	6
⑬	ST3. 9*32	6
⑭	ST3. 9*9. 5	6
⑮	ST3. 9*32	8
⑯	ST3. 9*9. 5	4

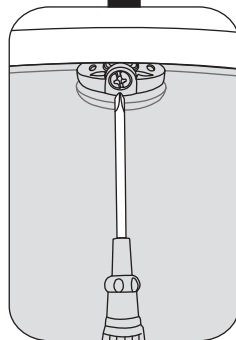
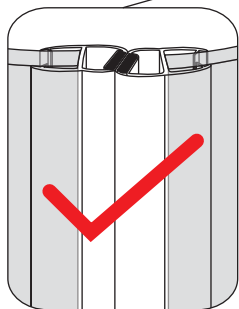
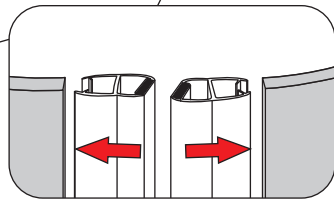
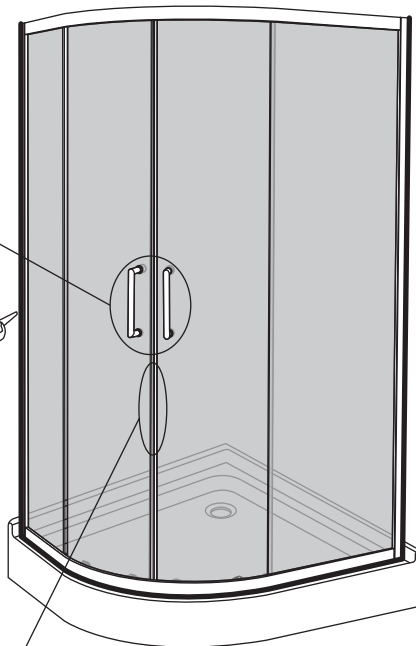
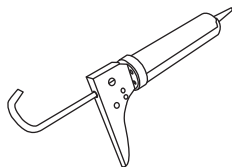
## Attentions and maintenance

- 1: Please keep the base clean, avoid hairs or dirties block up drainage pipes. If some water scale on the surface of bases, please use soft wet cloth with tooth paste to clean.
- 2: Please do not use acidic, alkaline or organic solvent (such as alcohol, thinners, ammonia water, acetone and so on) to clean the surface of products, suggest using neutral alcohol to do cleaning.
- 3: For plated items, use soft cloth to clean, do not use tough cloth.
- 4: Alloyed aluminium maintenance: For oxidation coloring (such as golden, matt silver, chrome, polished), do not use tough cloth to clean, can not scratch the surface with sharp objects; If some dirties on the surface, please use alcohol to clean.

⑧+⑨



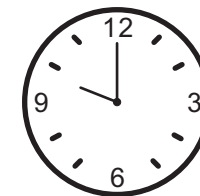
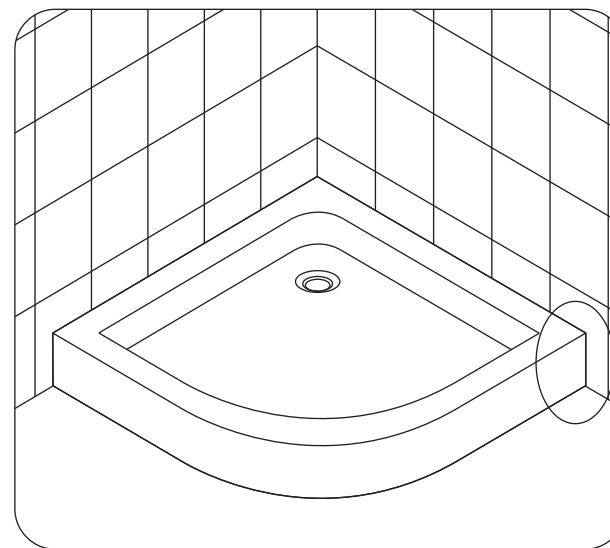
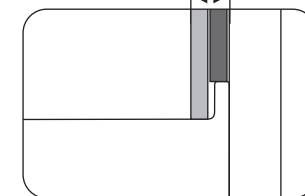
**Attentions:**  
Showering is banned within 24 hours after silicone;  
If bad weather such as rainy days or in winter,  
longer time is needed.



**Attentions:**  
Please use cross screwdriver to adjust the screws, in order to keep  
glass stable and magnet strips aligned.  
(Clockwise, the glass go down, anti-clockwise, the glass lift up)

## CONTINUED

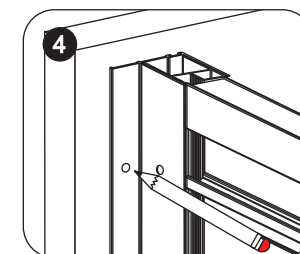
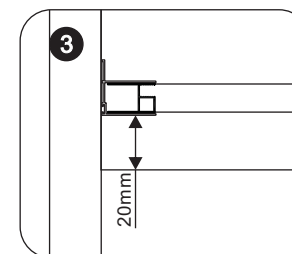
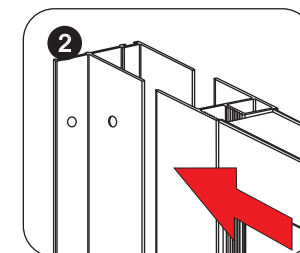
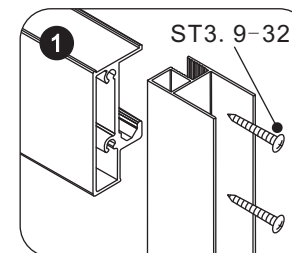
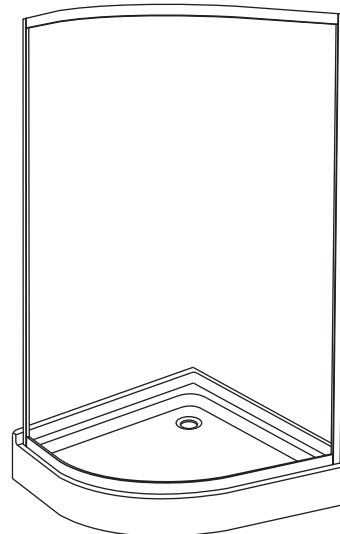
20-25mm



### WARNING!

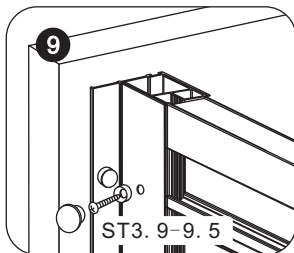
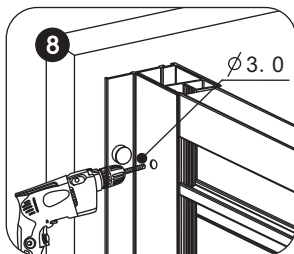
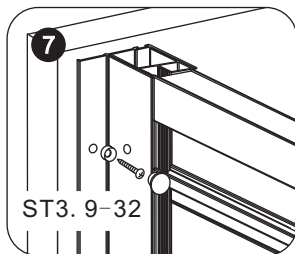
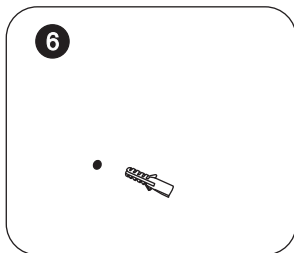
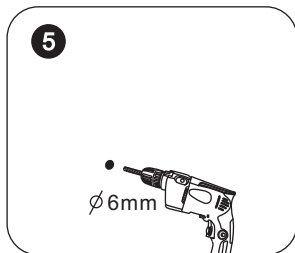
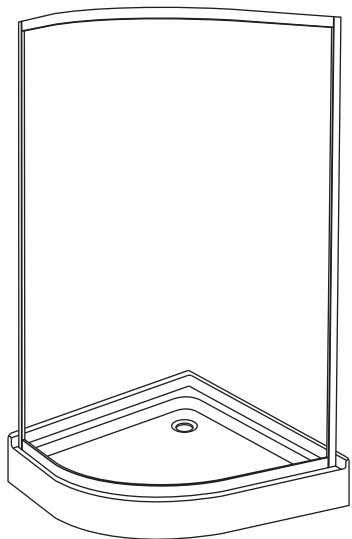
- To protect your shower base finish.
- Wait 24h before proceeding with the installation of the shower door.  
This will ensure that the finish and mortar are dry.

①+②+③+⑮



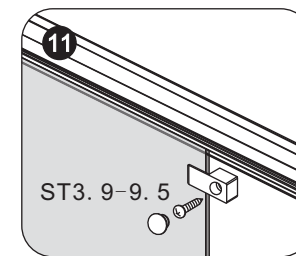
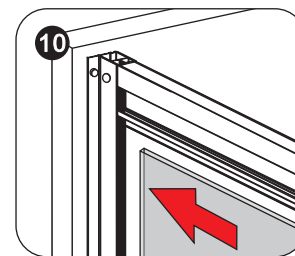
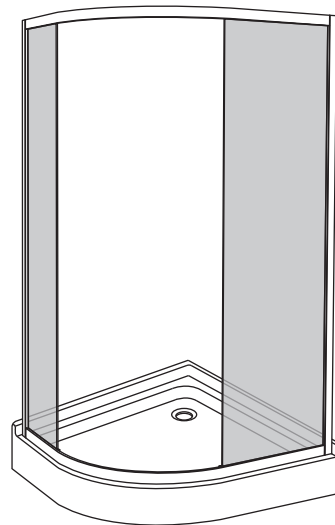
- Joining the wall channel and rolling bar, put the whole frame into the wall channel.
- Temporary installation wall channel installation.
- Mark the wall channel on both side.

11+12+13+14

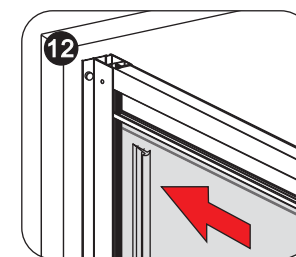


- Install 2 screws.
- Fix the frame and wall channel.

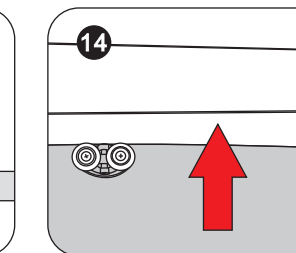
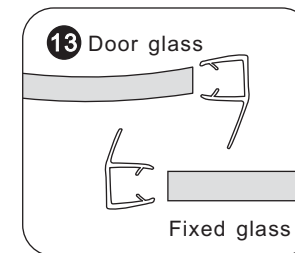
4+10+16+7



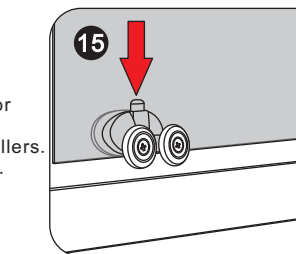
- Put the fix glass into the glass channel.
- Install the glass brackets.
- Squeeze the gasket.



5+6



- Install the gasket kit onto the door glass and fix glass.
- Press the button of the bottom rollers.
- Let the rollers into the rolling bar.



**Attentions:**

If the bottom rollers can not be placed into the rolling bar, please adjust the cross screw of the top rollers. (Clockwise, the door glass down; anti-clockwise, the door glass up)