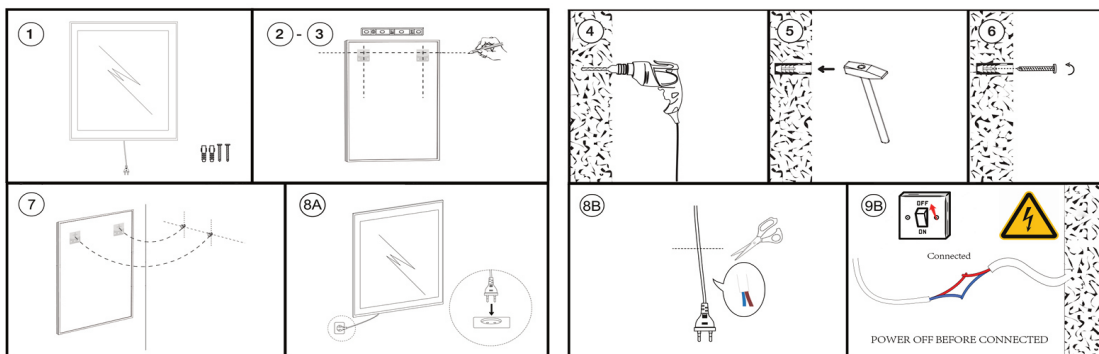
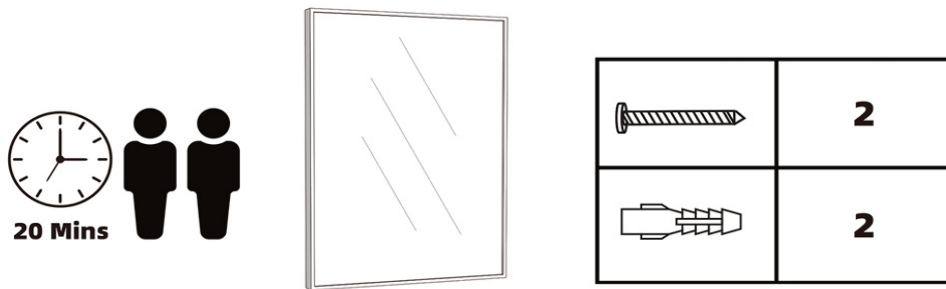


LED MIRROR INSTALLATION



1. Measure the distance between the key-hole centers on the back of the mirror.
- 2-3. Draw a horizontal line on the wall according to the height at which you want to hang the mirror and mark the hole positions on the wall with a pencil, using the dimension taken from step 1.
4. Drill the hole with a percussion drill, using the hole positions from step 2-3. Ensure that the hole positions are horizontal.
5. Use a hammer to nail the expansion bolt plug into the hole and keep it level with the wall.
Note: The expansion bolt plugs supplied are only suitable for solid stone/brick walls. For any other wall types, please go to the store to buy the correct plugs and screws after checking.
6. Use a screwdriver to tighten the screw into the expansion bolt, leaving approximately 5-10mm of the screw standing proud of the wall.
7. Hang the mirror onto the screws fitted to the wall. Ensure the mirror is securely mounted.
8. The next step is to make the electrical connection from the mirror to the mains supply.

Follow the ELECTRIC CONNECTIONS GUIDE.

ELECTRIC CONNECTIONS GUIDE.

**ALL WIRING SHOULD BE DONE BY A QUALIFIED LICENSED ELECTRICIAN.
WARNING: SHUT OFF POWER BEFORE WIRING THE MIRROR.**

9B. Peel off the 2 wire and connect to the same wire in the wall.

OPERATING INSTRUCTIONS



SHORT PRESS



LONG PRESS



SHORT PRESS
Defog-switch on/off



LONG PRESS (please turn off the function): enter clock setting, the year will be flashing, shortly press light-switch to set the year. Use the same way to set month, date and time.

